

SOHORAID

SR4-TB2

Up to

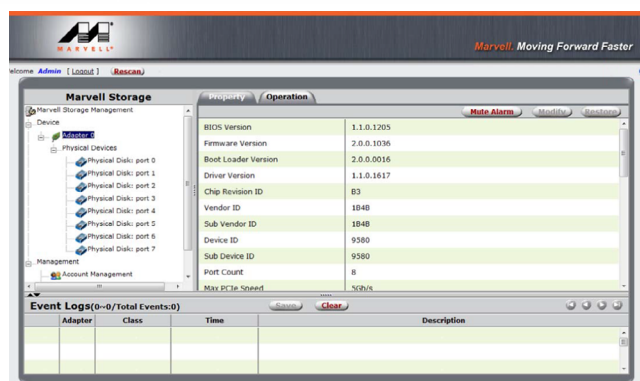
40TBBig storage
for video & photo.

Embedded disk array controller

The embedded disk array controller allows the data of a single damaged hard disk to be completing preserved without affecting system efficiency. For users requiring large data storage space, the SR4-TB2's RAID 5 provides the most cost-effective solution for data security and backup. The SR4-TB2 can be installed by following the simple steps in GUI, and users can select to use from the multiple modes, JBOD, RAID 0, RAID 1, RAID 5, RAID 6 or RAID 10. With the hassle-free software installation and setup, users can enjoy the large capacity and content safe storage right after formatting the hard disk.

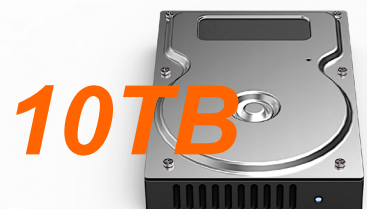
User-friendly GUI

Marvell Config Tool, a Graphical User Interface, for customized performance settings.



**Big storage volume for your creative contents.
Up to 40TB.**

SR4-TB2 holds any capacity of SATA hard drives up to 10TB per drive bay. With all drive bays installing 10TB drives, in RAID 0 mode, the system will give you a total of 40TB in volume for storage, and under the RAID 5 mode, a total of 30TB in volume for storage with a single drive used for redundancy.



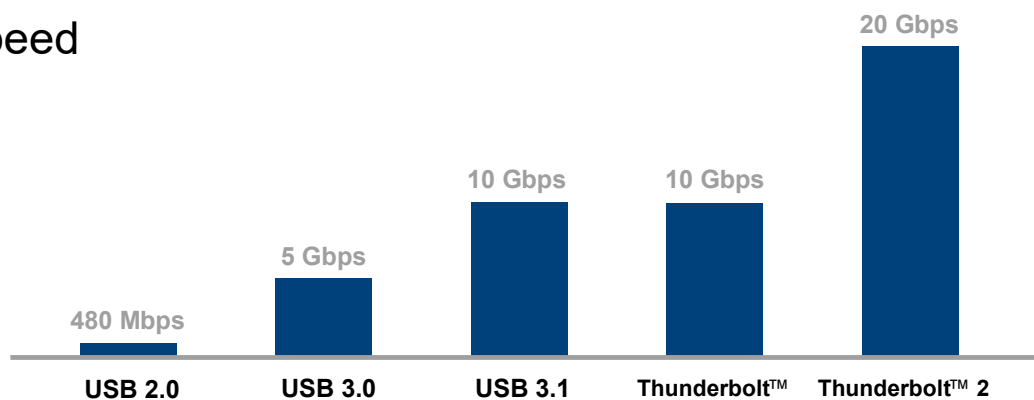
Thunderbolt 2

The faster and versatile versatile I/O in any desktop. Of any size.

Thunderbolt 2 technology in SR4-TB2 is phenomenally fast. The two Thunderbolt 2 ports on SR4-TB2 features dual 20-Gbps channels for data transfer and that's up to four times faster than USB 3. But beyond speed, Thunderbolt gives you unprecedented expansion capabilities. You can daisy-chain as many as six Thunderbolt devices to a single port.

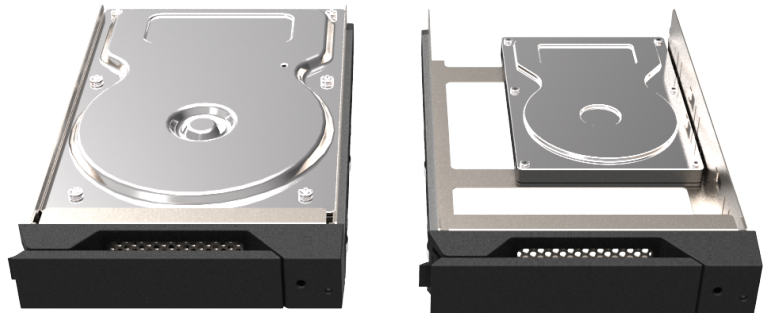


More Speed



Removable and flexible metal tray design

User can choose to use 3.5" SATA hard drives or 2.5" SATA hard drives /solid state disks easily.



Compact and portable too

For field editing applications, the SR4-TB2 can be made portable as it comes with a grip handle, which you can choose to install for making creative contents mobile convenient and less bulky.



Products Views



Specification

Model No	SR4-TB2
Interfaces	Thunderbolt 2 Port x 2 (up to 20 Gbps)
Compatible Drive	4 x 3.5" /2.5" SATA III HDD/SSD (up to 6 Gbps) / Support large volume up to 10TB
Storage Mode	Hardware RAID (0,1,5,6,10 & JBOD)
Cooling System	8 cm Low noise fan
Electrical and Operating Requirements	<ul style="list-style-type: none"> * Line voltage: 100-240V AC * Frequency: 50Hz to 60Hz, single phase * Maximum continuous power: 150W * Operating temperature: 32° to 104° F (0° to 40° C) * Storage temperature: -4° to 116° F (-20° to 47° C) * Relative humidity: 5% to 95% noncondensing
Size and Weight	Width: 124 mm Height: 166 mm Depth: 265.45 mm Weight: 3.585 kg
Product Code	EAN: 4713227440080 UPC: 884826504269
Carton	4 pcs per carton
Package Accessories	<ul style="list-style-type: none"> * SR4-TB2 x 1 (with removable drive tray enclosed x 4) * Thunderbolt Cable x 1 * AC Power Cable x 1 * Handle x 1 * Quick Installation Guide x 1 * Screws & Keys